

# Polo 1 Esec

## Piso 2

Salas de Aula 1 a 6

**ESCOLA SUPERIOR DE EDUCAÇÃO DE COIMBRA** Coimbra Education School

**homepage** \_ [www.esec.pt](http://www.esec.pt)

**facebook** \_ [www.facebook.com/esec.coimbra](https://www.facebook.com/esec.coimbra)

**telefone** \_ 239 793 120 | **fax** 239 410 461

**email** \_ [presidente@esec.pt](mailto:presidente@esec.pt)

**morada** \_ Rua Dom João III - Solum 3030-329 - Coimbra - Portugal

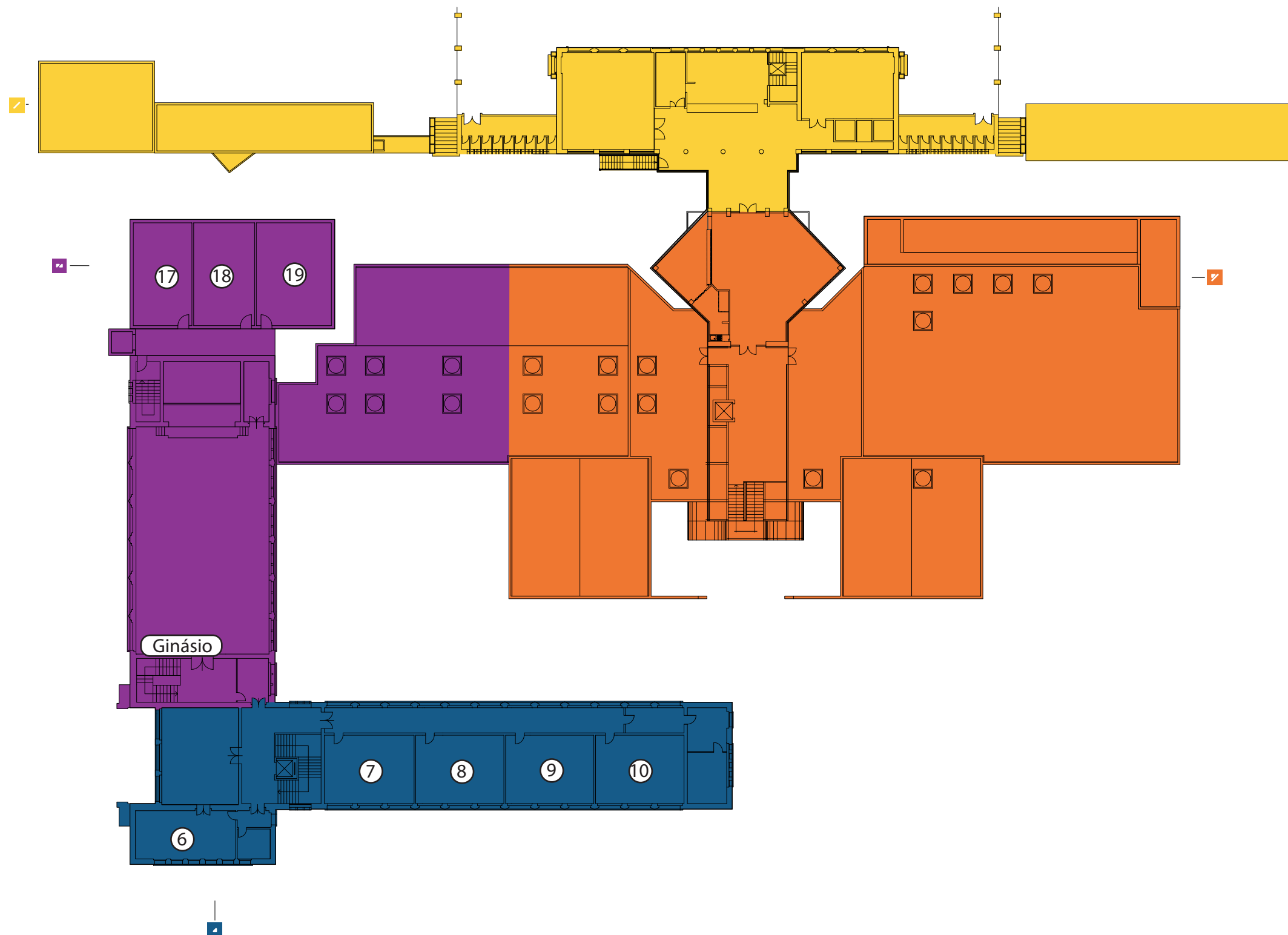


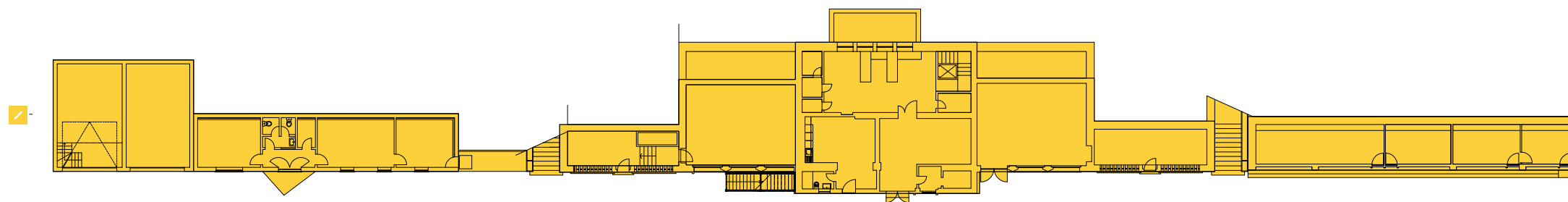
GPS 40°12'18.8"N 8°24'21.4"W

# Polo 1 Esec

## Piso 1

Salas de Aula 6 a 10 e 17 a 19

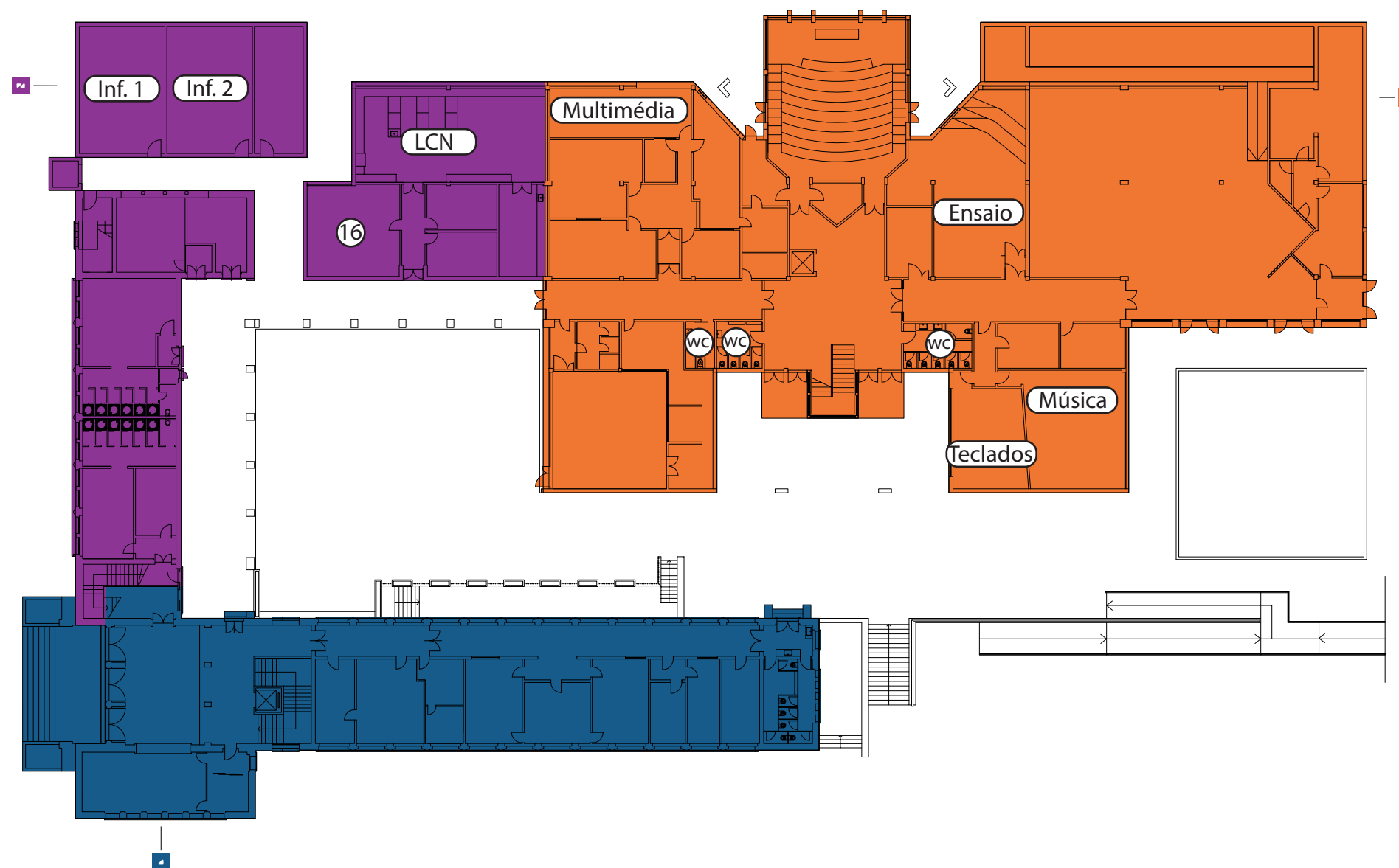




# Polo 1 Esec

## Piso 0

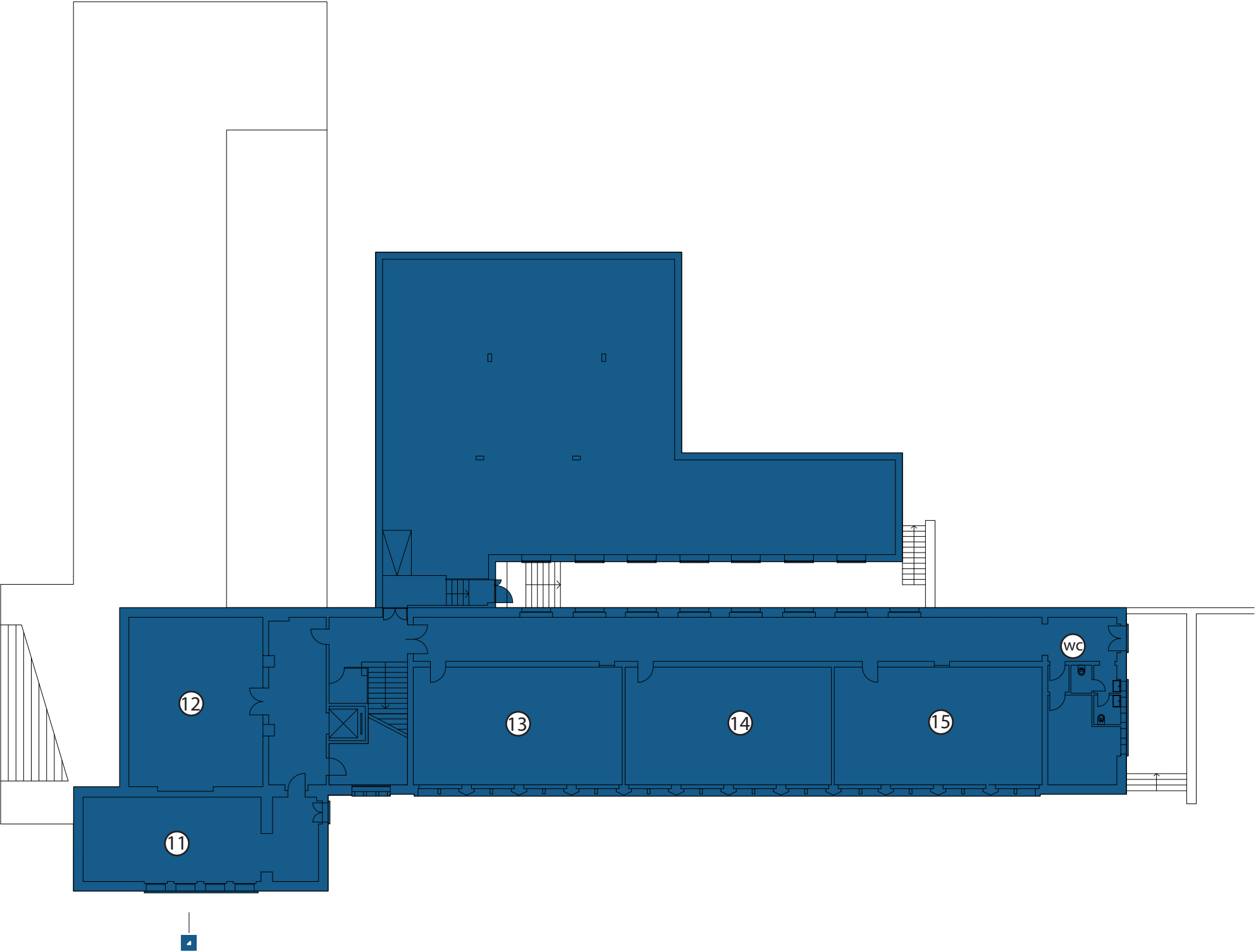
Salas de Aula, Música,  
Informática e Multimédia

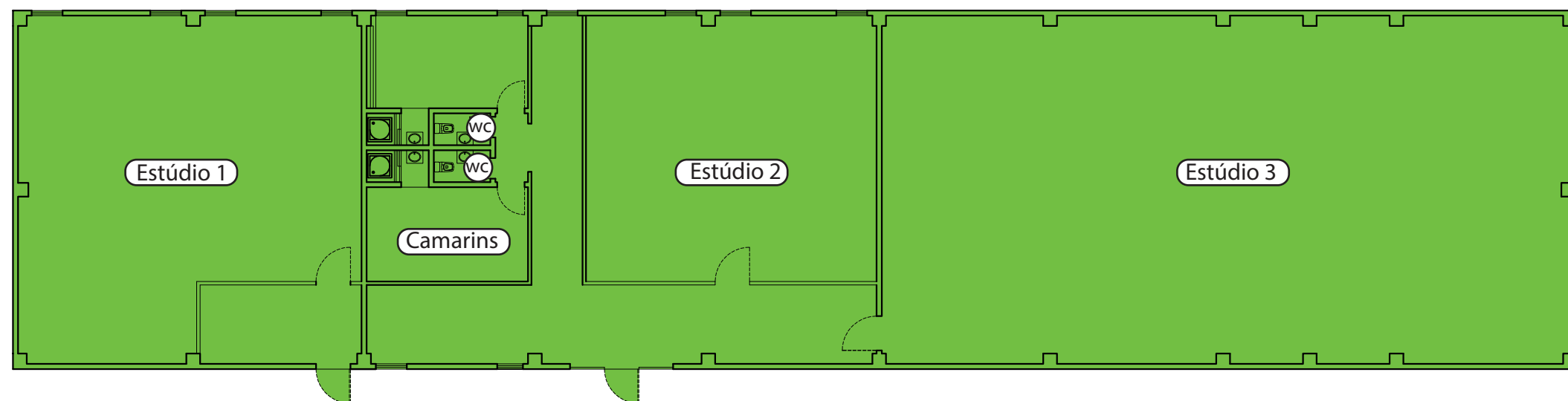


Polo 1 Esec

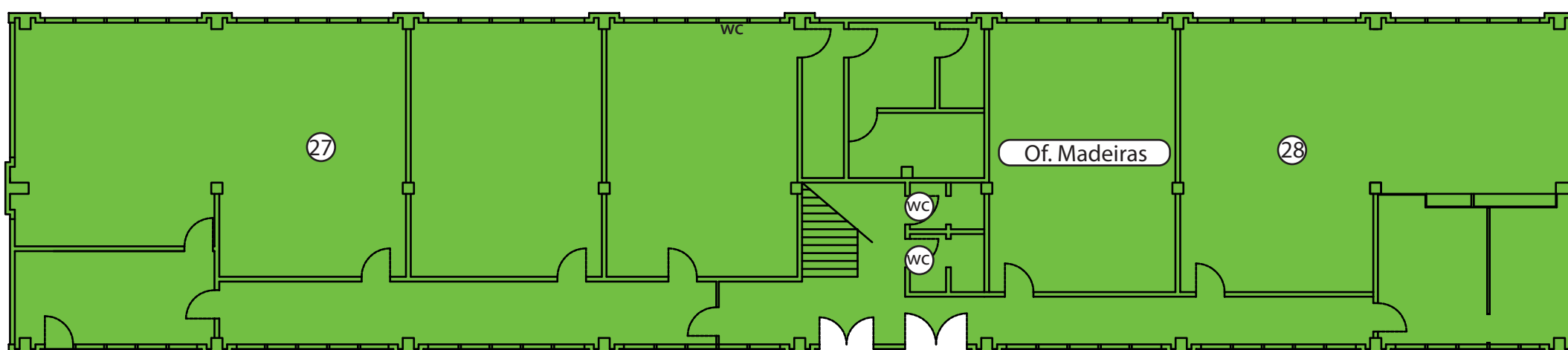
Piso -1

Salas de Aula 11 a 15

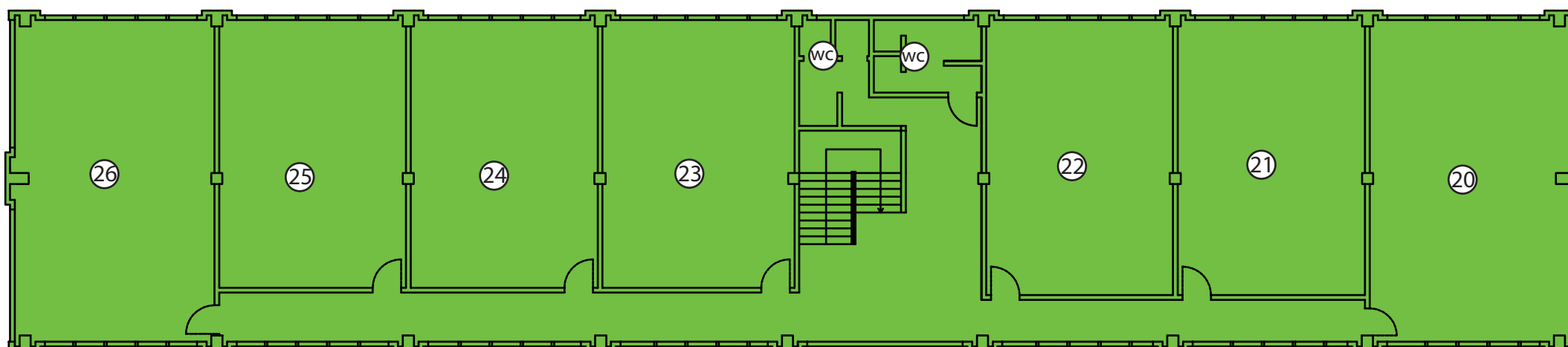




Polo 2 Esec  
Piso 0  
Estúdios 1 a 3



Polo 2 Esec  
Piso 0  
Salas de Aula 27 e 28



Polo 2 Esec  
Piso 1  
Salas de Aula 20 a 26

